

# PULLEN

ESTATE AGENTS



## 20 Marlowe Close

, Chislehurst, BR7 6ND

**Offers in excess of £1,650,000**

Welcome to this magnificent five-bedroom detached house nestled in the prestigious Marlowe Close. This exceptional property combines luxurious living with modern convenience, making it the perfect family home.

- Envious Cul-de-sac location
- Five double bedrooms
- Impressive kitchen diner
- Generous garden measuring over 100ft
- Ensuite to master bedrooms
- Carriage driveway

### Viewing

Please contact our Chislehurst Office on 02034899589 if you wish to arrange a viewing appointment for this property or require further information.



5



3



4



3



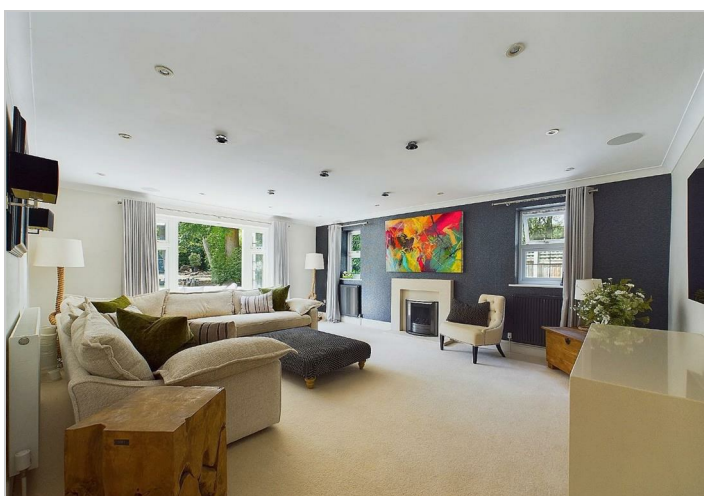
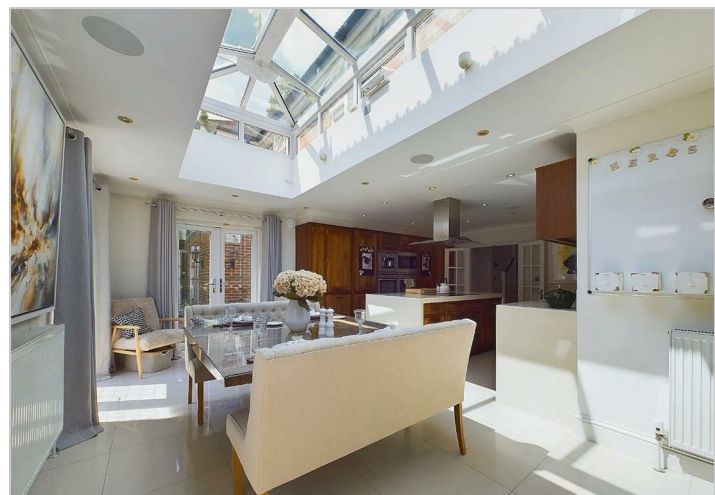
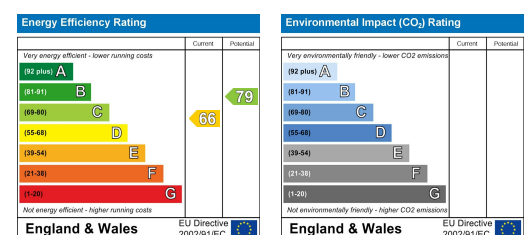
## Floor Plan



## Area Map



## Energy Efficiency Graph



These particulars, whilst believed to be accurate are set out as a general outline only for guidance and do not constitute any part of an offer or contract. Intending purchasers should not rely on them as statements of representation of fact, but must satisfy themselves by inspection or otherwise as to their accuracy. No person in this firm's employment has the authority to make or give any representation or warranty in respect of the property.

7 Thorndale, Lubbock Road Lubbock Road, Kent, BR7 5JN  
Tel: 02034899589 Email: [tom@pullenestateagents.co.uk](mailto:tom@pullenestateagents.co.uk)